

From: [REDACTED]
To: [Morgan and Morecambe OWFTA; info@morecambeandmorgan.com](mailto:info@morecambeandmorgan.com)
Subject: RELEVANT REPRESENTATION ON THE PROPOSED MORGAN AND MORECAMBE OFFSHORE WIND FARMS TRANSMISSION ASSETS DCO PLANNING INSPECTORATE REFERENCE NUMBER: EN020028
Date: 07 July 2025 23:09:00
Attachments: [REDACTED]

Hello,

Please find attached the formal response submitted on behalf of the Newton Residents Association (NRA), representing the village of Newton-with-Scales, Lancashire, following our in person representation on Tuesday 24th June 2025.

The NRA objects to the siting of the Morgan and Morecambe onshore substations so close to the village and considers the process that arrived at the shortlist of one site for Morgan and two for Morecambe and the consultation generally to have been seriously flawed.

The submission documents our concerns, especially the cumulative impact of numerous energy projects which would encircle the village and while the substations remain in their proposed locations, the NRA opposes this element of the project and will continue to do so throughout the process until their impacts have been reduced to acceptable levels, most easily achieved by moving to a more satisfactory location away from residential receptors.

Kind Regards,

NRA Committee

Newton Residents Association



RELEVANT REPRESENTATION ON THE PROPOSED MORGAN AND MORECAMBE OFFSHORE WIND FARMS TRANSMISSION ASSETS DCO PLANNING INSPECTORATE REFERENCE NUMBER: EN020028

INTRODUCTION

This is a Relevant Representation (RR) regarding the Morgan and Morecambe Offshore Windfarm Transmission Assets Project (the Project), promoted by Morgan Offshore Wind Limited and Morecambe Offshore Windfarm Limited (the Applicant) made by the Newton Residents Association (NRA)

The NRA objects to the Project on the grounds set forth in this RR. These grounds raise questions about the Applicant's reasoning for the proposed site locations for the Morgan and Morecambe onshore transmission assets, as well as the cumulative detrimental environmental consequences of this decision.

We express our serious and heartfelt concerns about the irreversible onshore elements of the Morecambe and Morgan offshore windfarm projects.

While these projects are promoted as clean energy solutions, for us in the Fylde, especially in Newton with Scales, Freckleton, and Kirkham the cost is devastating.

This isn't just about cables and substations. It is about what we stand to lose **forever**.

The plan includes 35 kilometres of underground cables stretching from Blackpool Airport to Penwortham via Newton where it is proposed to construct two vast substations. Originally each about 34 acres in size, with buildings up to 25 metres high. That is the equivalent of **17 football pitches per site**.

We acknowledge and welcome the Applicant's efforts to reduce and streamline certain aspects of its Project design since its consultation on the Preliminary Environmental Information Report (PEIR). Nevertheless, certain crucial aspects are yet to be addressed or justified. For example, the maximum height of the Morecambe substation has decreased from 20 meters to 13 meters, but the equivalent metric for the Morgan substation has decreased from 20m to only 15m.

There is no explanation provided for this distinction. These heights exclude the significantly taller lightning protection masts that will be positioned across both substation locations. These heights are higher than any building within the Green Belt or any of the surrounding residential centres. In addition, the temporary access track width for both substations has been increased from 15 meters to 20 meters.

In terms of size, the dimensions of the substations are equally disproportionately large and intrusive, and the reason for this remains unclear. The Applicant proposes to take **22.35** hectares of Green Belt land with a **16.6 hectare** footprint for the Morgan substation and **5.95 hectare** footprint for the Morecambe substation for a system with a headline output of 2GW. By contrast, the two converter substations for the 2.4GW Dogger Bank A&B Offshore wind farms occupy a footprint of a total of 7.5 hectares. Additionally, the substations for the Hornsea One and Two wind farms, which generate 2.5GW, have a footprint of 7.1 hectares, and the substation for the Mooir Vannin wind farm which is expected to generate 1.4GW, has a maximum footprint of 6.6 hectares. Considering this, Insufficient explanation or justification has been provided by the Applicant. Had the Applicant chosen a smaller design, this would have increased their pool of possible locations, potentially eliminating the need to take Green Belt land.

These industrial installations are proposed on greenbelt land some of the best and most productive farmland in our region. This land feeds our communities, supports our rural economy, and defines the identity of our countryside.

Once in place, these substations will run 24/7. They will **hum**, they will **buzz**, they will **light up the night sky**. What is now peaceful and green will be permanently transformed into an industrial corridor.

The cable trench passes close to Newton Bluecoat Primary School and crosses key local roads. These impacts were never made clear to the public. We are not just worried, we are frightened. These installations bring constant noise, light pollution, and electromagnetic emissions next to homes, schools, and children.

We risk losing access to cherished footpaths, bridleways, and green spaces. Local farms and small holdings are under threat. And the historical fabric of our villages. Newton, Clifton and Salwick are all mentioned in the **Domesday Book** and face irreversible damage.

HGV traffic is forecast to rise by up to 700%. Our narrow rural roads simply cannot cope. And despite repeated requests, we still have **no visual renderings** of the substations. **No clear noise limits. No clear drainage plans. No clear mitigation strategies. No enforcement guarantees, in short “No answers”.**

We are told this is about sustainability and yet it destroys greenbelt protections and vital **Areas of Separation** that prevent our villages from being swallowed by urban sprawl.

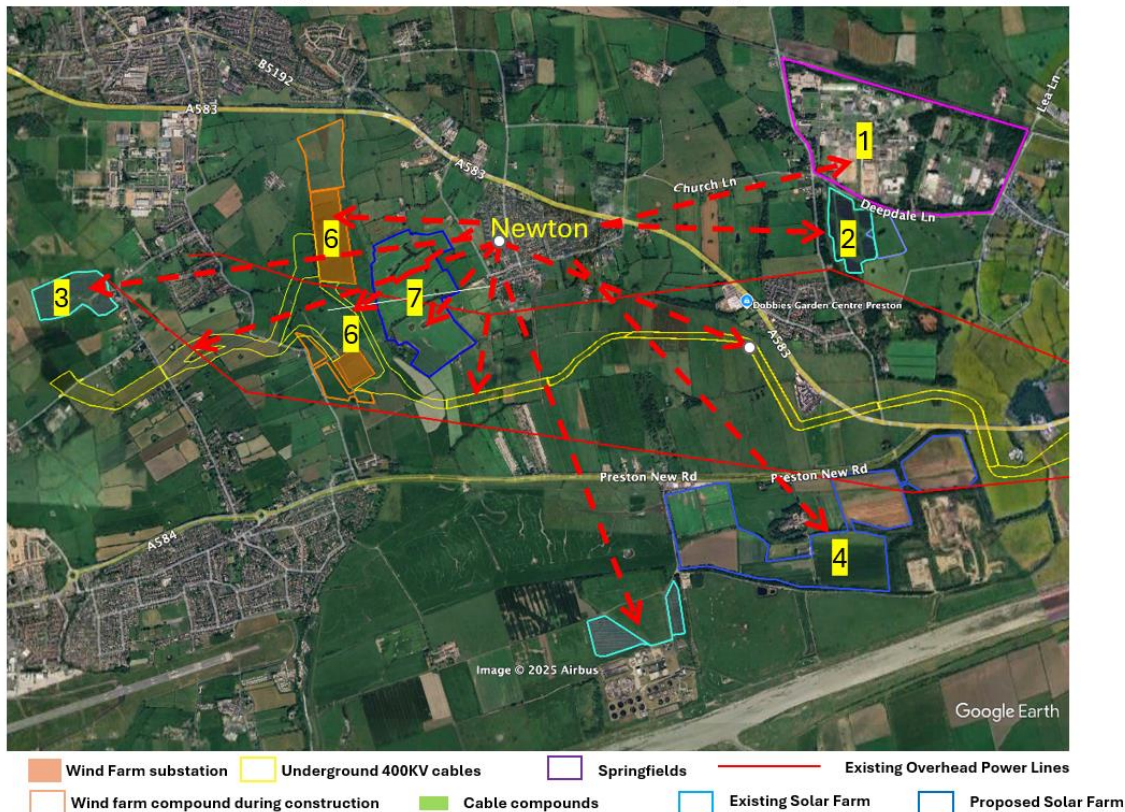
We are told it's about clean energy and yet valuable farmland will be compulsorily purchased and built over.

Where is the balance between energy security and food security?

And this is not happening in isolation.

We already live near two operational solar farms, **25 acres** to the north of Clifton (1) and **25 acres** to the west of the parish at Hall cross (2). Now, two more are proposed: **170 acres** at Clifton Marsh (4) and another **79-acre site** west of Newton (7).

Renewable Energy in Newton with Clifton Parish – (Construction Phase)



We

recently drew attention to this second site, indicated as “7” in the above diagram (ref 24/0541) as the applicant has changed their construction access to use “Lower Lane” rather than “Parrox Lane” in Newton. We would contest this is also not suitable and dangerous and yet it is also a preference for the M&M project. This would lead to a more protracted and harmful impact on the residents of Lower Lane.

Bit by bit, we are being encircled by **300 acres** of energy infrastructure on top of the proposed **45 acres** for the 2 substations, identified as (6) in the above diagram.

Our green and pleasant land is becoming an energy corridor.

And all the while, brownfield alternatives at Hill House and industrial sites are dismissed without proper assessment despite potential significant project savings, estimated at over £900m.

Let me be clear: we are not against renewable energy, We support it, We want a greener future. But we also want **fairness, transparency,** and a **voice** in the process.

The way this project has been ill-managed, through unclear consultation, missing information, and a disregard for residents' concerns, has shattered public trust noting many residents only realised the potential impact and scale of the project plan recently when it was nearly too late.

We are calling for better. We are asking for a full reassessment of site selection, a revised and full review of environmental impacts, and given the deeply flawed consultation process we are calling for a revised and improved consultation which actually consults with all impacted parties.

We are asking you, the Examining Authority, **to listen** not just to data, but **to people**. To see the human cost, the rural cost **the permanent cost** of getting this wrong.

Let's work toward smarter, fairer, and truly sustainable solutions. Let's protect the Fylde not just for today, but for the generations to come.

Let's protect our farmers. Let's protect our homes. Let's protect our children and let's protect our **Green and Pleasant Land**.

Thank you.

Newton Residents Association